



# Installing Ubuntu 7.10

Celso Timana



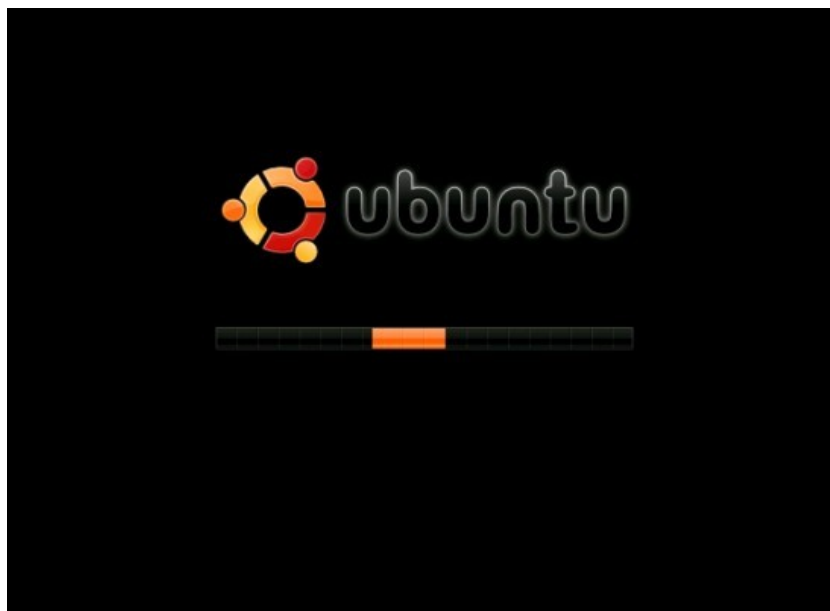
The long waited Ubuntu Gutsy Gibbon 7.10 is out on net for everyone. A lot of good features are implemented such as Compiz, automatic printer installation and many more.

For the first time in 3 years continually using Open Source Software I've started working with Ubuntu with Gnome as my GUI (it was hard to let KDE and all the stuff). What I am gonna present here is the Ubuntu Gutsy Gibbon 7.10 installation.

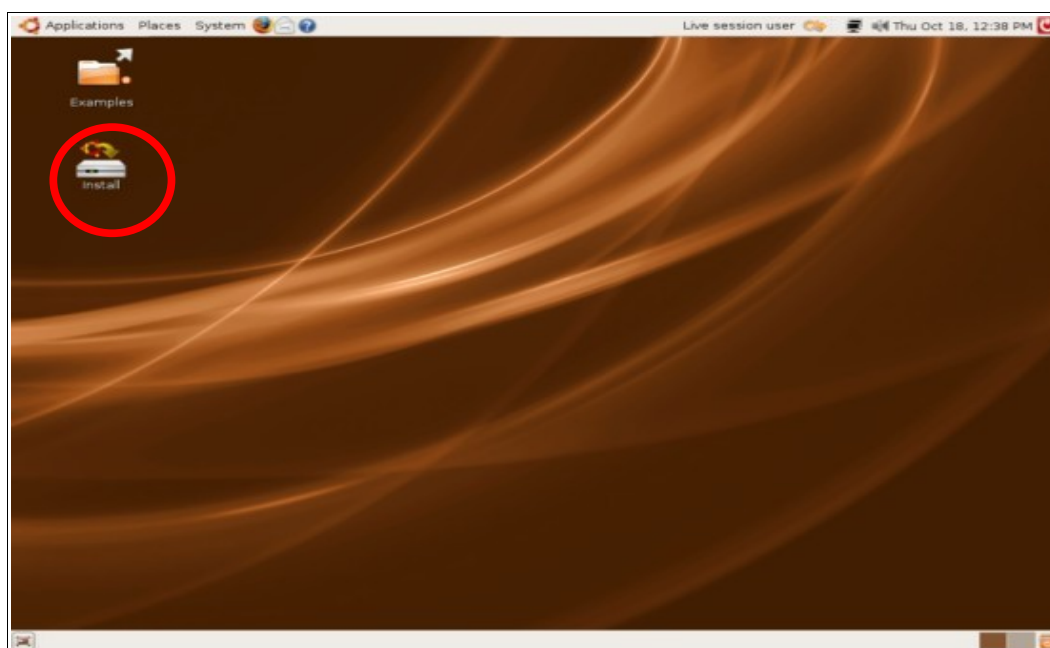
Lets start with the installation, and the procedure is: get the CD and insert in your computer, restart and after some seconds you will see this:



Take the first option if you to start the Live CD to install Ubuntu 7.10.



You must wait some seconds (or minutes depend on you CD-ROM velocity and your RAM) and after that you will be able to see this:

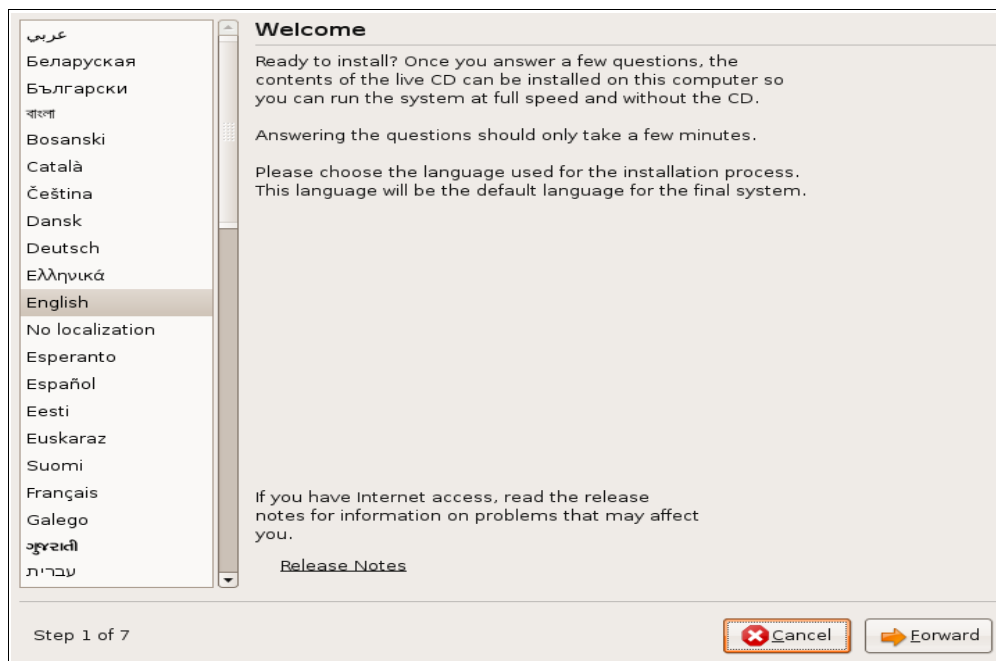


You can experience Ubuntu with your LiveCD without install in you computer. Programs such, Firefox, OpenOffice.org.2.3, Evolution and others, now they come whthin your LiveCD Ubuntu 7.10

To proceed with the installation you must double click on the icon that is written INSTALL (marked

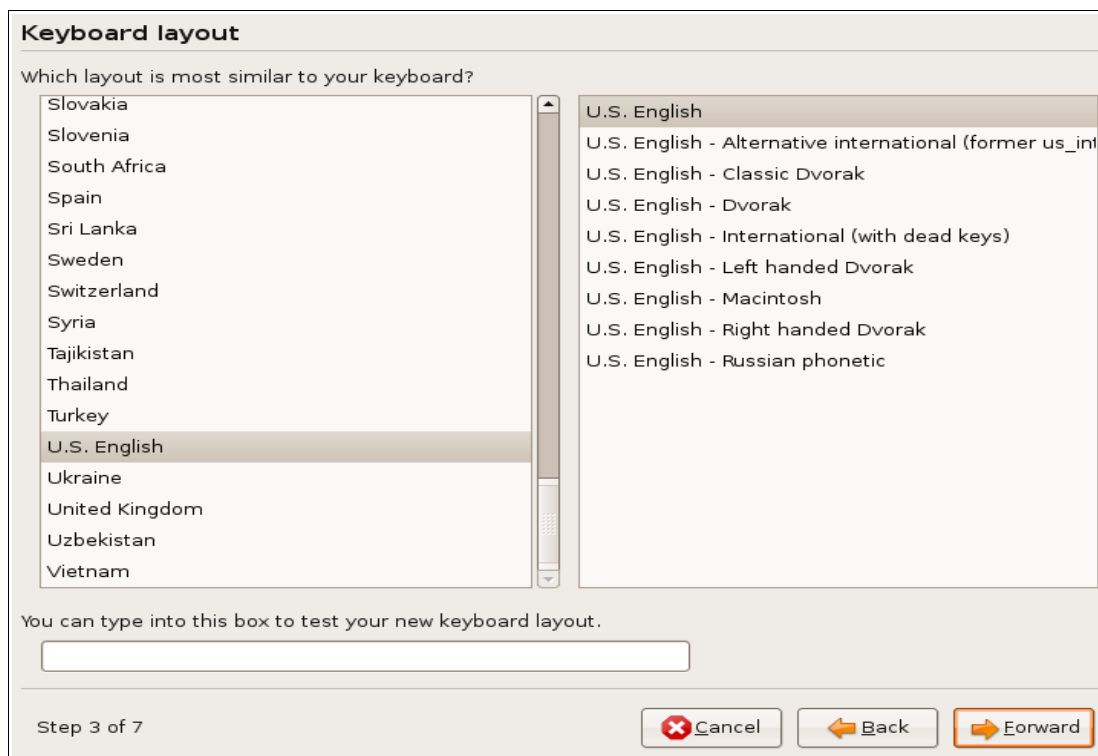


with the red circle). After this you will see the **first** of 7 steps to install Ubuntu 7.10.



Select your language and then click **Forward** (my advice, stick with English :-))

### Second step





You must select the keyboard type that you are using. Me, I am using a Fujitsu Siemens Amilo Pro with Germany keyboard, so for you just take you are working with and then click **Forward**.

Third step:



Depending on how your hard disc is partitioned you must choose the desired partition to install. If you got a new PC you can take the second option: **Guided – use entire disc**.

#### **My recommendation:**

Create your partitions with Gparted, is a nice LiveCD with Gnome, as Window Manager, to partitioning storage devices. You can get it the latest version on this link: <http://gparted.sourceforge.net/download.php>

You can either choose if you want a iso image for CD or USB Stick.

#### **Fourth Step:**



**Prepare partitions**

Device	Type	Mount point	Format?	Size	Used
<b>/dev/sda</b>					
/dev/sda1	swap		<input type="checkbox"/>	1073 MB	0 MB
/dev/sda2	ext3	/media/sda2	<input type="checkbox"/>	67 MB	28 MB
/dev/sda3	ext3	/media/sda3	<input type="checkbox"/>	10737 MB	8800 MB
<b>/dev/sda5</b>	<b>ext3</b>	<b>/media/sda5</b>	<input type="checkbox"/>	<b>10737 MB</b>	<b>5600 MB</b>
/dev/sda6	ext3	/media/sda6	<input type="checkbox"/>	786 MB	760 MB
/dev/sda7	reiserfs	/media/sda7	<input type="checkbox"/>	4295 MB	unknown
/dev/sda8	ext3	/media/sda8	<input type="checkbox"/>	32312 MB	13400 MB

You need to specify a partition for the root file system (mount point "/") with a minimum size of 2 GB, and a swap partition of at least 256 MB. You may also set up other partitions if you wish.

Step 4 of 7

Double click here to select this partition as root partition

Click here to format the partition

Now you must choose the partition where you want to install Ubuntu 7.10. In my case I've just chosen my **/dev/sda5** partition to put Ubuntu 7.10. You must indicate that this is the root partition with the forward slash (/) and select the format option for you **swap** partition and the root partition.

After that click **Forward**.



### Fifth Step

Now this part is very interesting for those with other distros. What Ubuntu 7.10 will do is, it will search for another GNU/Linux distros accounts, once the account is found it will ask if you want to migrate your account and your documents for the new Ubuntu 7.10.

#### Migrate Documents and Settings

Select any accounts you would like to import and fill in the form below for each one. The documents and settings for these accounts will be available after the install completes.

If you do not wish to import any accounts, select nothing and go to the next page.

▶  cd *Ubuntu 6.06.1 LTS (6.06) (sda3)*

Create a user to import the selected account into:

Full Name:

Login Name:  ▼

Password:

Confirm:

Step 5 of 7

Fill the necessary fields if you have an account to migrate. For me it was found my good and old Kubuntu Dapper Drake 6.06 Long Term Support on my /dev/sda3 partition.

After all the fields filled just click **Forward**



## Sixth Step

**Who are you?**

What is your name?

What name do you want to use to log in?

*If more than one person will use this computer, you can set up multiple accounts after installation.*

Choose a password to keep your account safe.

*Enter the same password twice, so that it can be checked for typing errors.*

What is the name of this computer?

*This name will be used if you make the computer visible to others on a network.*

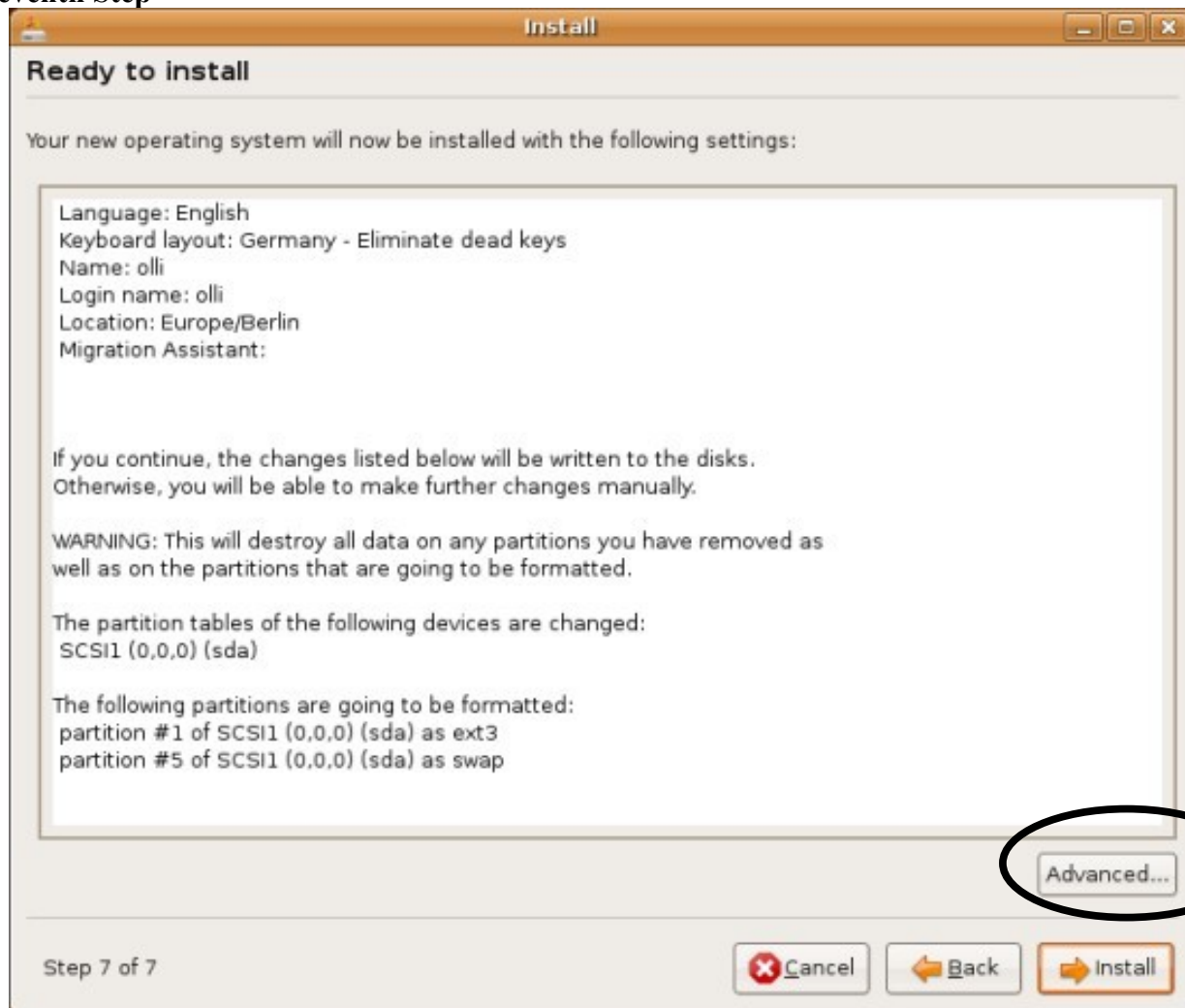
Step 6 of 7

We are now reaching to the final step, here you must put your Name, login name password. The hostname of your computer is automatically inserted (you can change if you don't like it).

**ATT: The password that you give to the system is valid for the your account and the root account. Those two user will share the password until you change it (if you know linux commands is peanuts).**

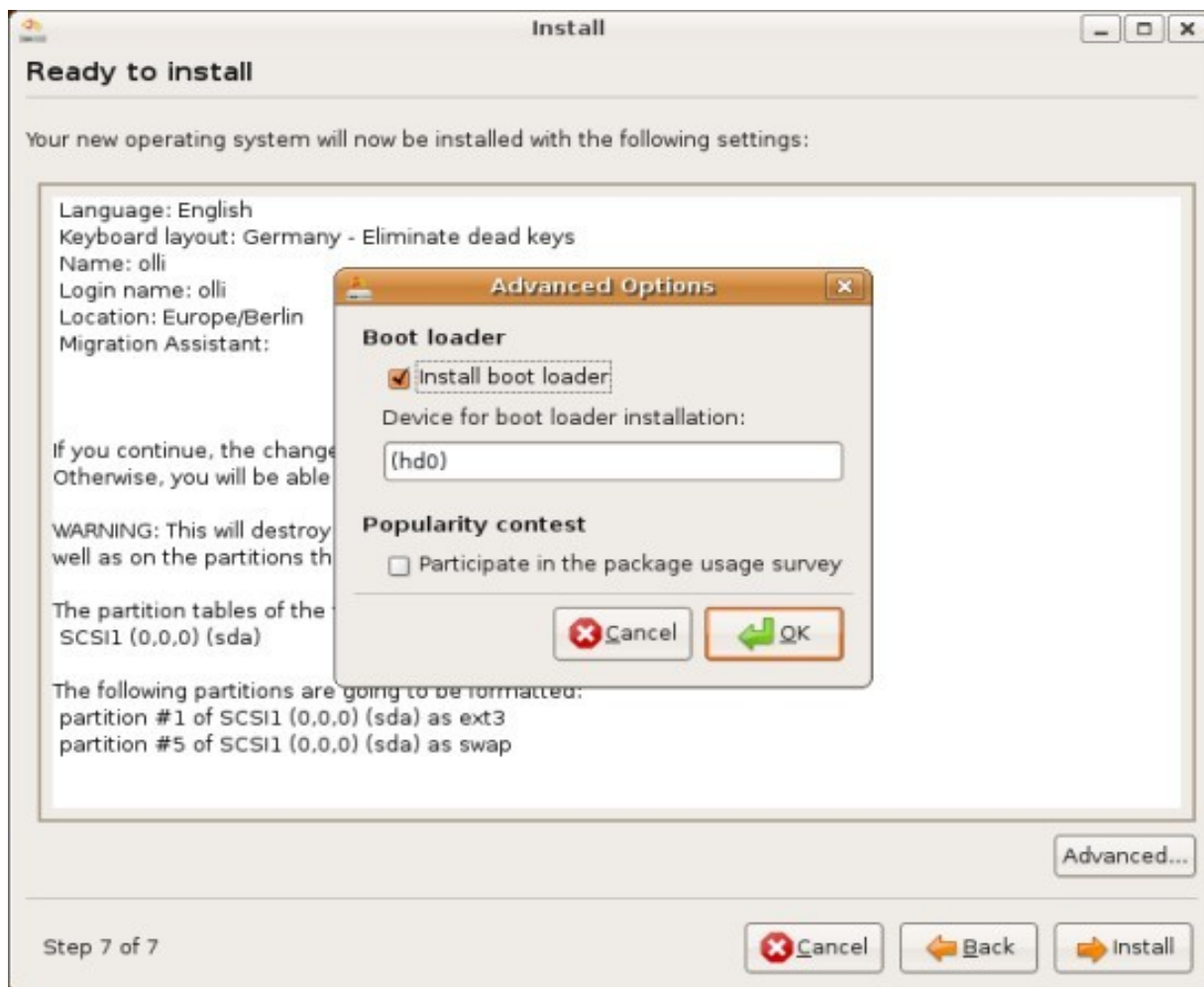


## Seventh Step

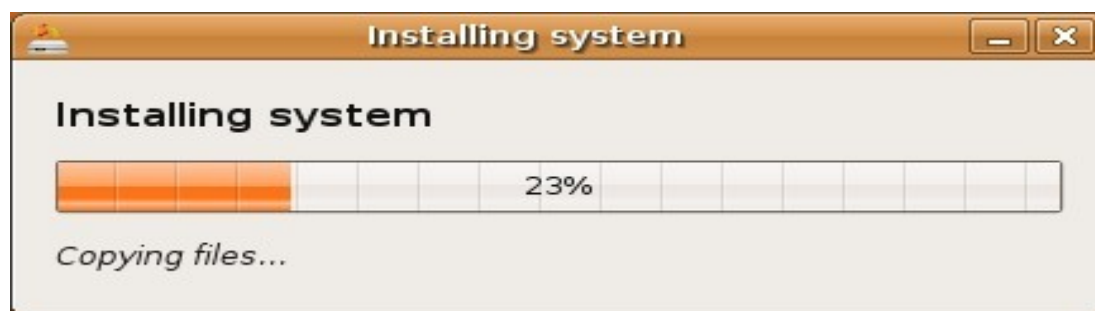


Confirm all the information that was setup by you, if you find something that is not correct just go **Back** and replace with the real information.

**ATT:** If you already have one boot partition and GRUB is there click on the Advanced button and don't select the GRUB installation, it will erase all the information that you have on you boot partition and replace with the new information that Ubuntu 7.10 will put there (don't make the same mistake that I did).



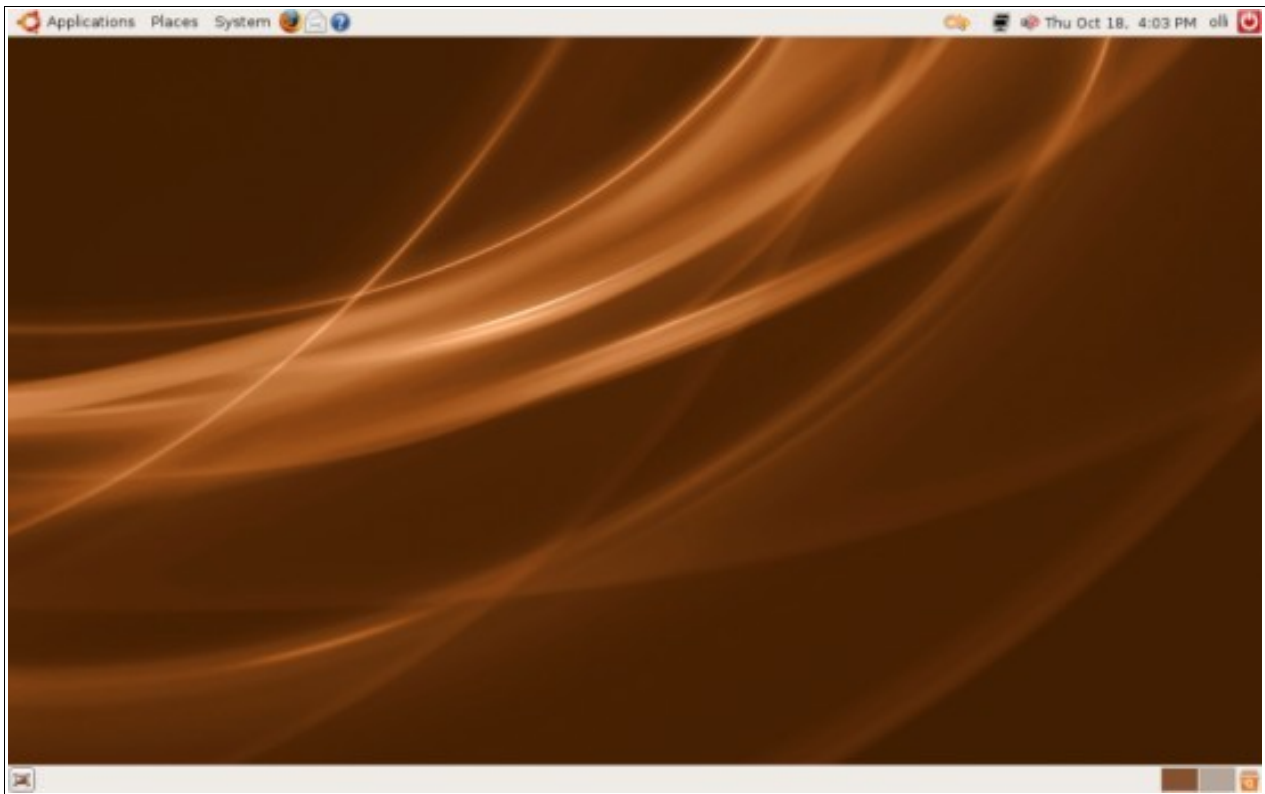
If everything is okay just press INSTALL, wait some minutes and will have the new Ubuntu Gutsy Gibbon 7.10.





Restart the computer and remove your LiveCD to test you new Ubuntu release.





Have fun with Ubuntu Gutsy Gibbon 7.10

Celso Timana